

Open Spelter Socket CP Green Pin® G-6412

Product information



The Green Pin® Open Spelter Socket CP is an open spelter socket with a spring pin. The socket is made from high tensile steel, while galvanization ensures its long-term durability. The Green Pin® Open Spelter Socket CP is available for wire rope with a diameter from 6-7 up to 108-115 mm and can be used in combination with the Socket Lock Socketing Resin.

Certification on request: 2.1, 2.2, 3.1

[... Read more](#)

Material: high tensile steel

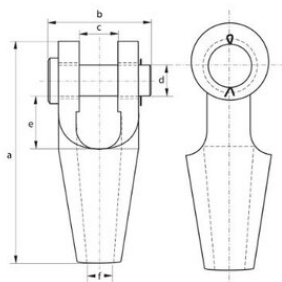
Marking: CE-marked

Temperature range: -20°C up to +200°C

Finish: hot dipped galvanized

Open Spelter Socket CP Green Pin® G-6412

Blueprint



Technical data

Part code	Rope Ø range	MBL ton	a mm	b mm mm	c mm	dmm mm	e mm mm	f mm mm	Weight kg
121500700350	6-7	8	109	51	19	16	33	9	0.47
121501000350	8-10	12	124	62	21	21	34	12	0.71
121501300350	11-13	20	143	66	26	25	37	15	0.99
121501600350	14-16	25	172	82	33	30	49	18	1.83
121501900350	18-19	45	205	95	38	35	58	21	3.09
121502200350	20-22	60	235	110	44	41	68	24	4.68
121502600350	23-26	85	275	130	51	51	75	28	8.35
121503000350	27-30	105	305	144	57	57	85	32	11.4
121503600350	31-36	136	338	155	63	64	95	38	15.5
121503900350	37-39	150	394	178	76	70	127	41	23.2
121504200350	40-42	170	418	187	76	76	127	44	27.4
121504800350	43-48	225	468	213	89	89	133	51	42.4
121505400350	49-54	280	552	240	101	95	180	57	63.9
121506000350	55-60	360	598	270	113	108	196	63	91.1
121506800350	61-68	425	654	303	127	121	212	73	127
121507500350	69-75	460	696	349	133	127	215	79	162
121508000350	76-80	560	737	371	146	133	219	86	187
121508600350	81-86	625	788	391	159	140	228	92	235
121509300350	87-93	720	852	411	171	152	242	99	294
121510200350	94-102	875	914	447	191	178	254	108	393