

Swivel Eye & Eye Crosby AS-5

Product information



Swivels with eye-eye, designed for high rotation speed.

- Lower torque required to initiate rotation.
- Angular contact bearings maximize efficiency, reliability, and service life of swivel and extend the life of the wire rope.
- Entire swivel is zinc plated to resist corrosion.
- Individually Proof Tested to 2 times the Working Load Limit with certification.
- Hook models utilize genuine Crosby hooks which are forged alloy steel, quenched and tempered, and contain patented QUIC-CHECK® markings.
- Each swivel 7.65 metric tons and larger is furnished with a pressure lubrication fitting.

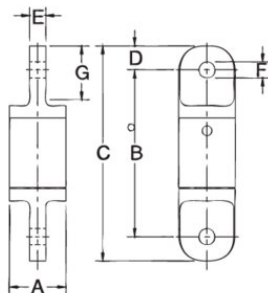
... [Read more](#)

Marking: CE-marked

Safety factor: 5:1

Swivel Eye & Eye Crosby AS-5

Blueprint



Technical data

Part code	Rope Ø range mm	WLL ton	A mm	B mm	C mm	D, mm	E mm	F mm	G, mm	Weight kg
422500040350	3	0.4	22.4	67	86	9.65	6.35	6.35	20.6	0.14
422500070350	6	0.68	33.3	95	118	11.2	7.85	9.65	22.4	0.41
422500140350	10	1.35	41.4	110	141	16	12.7	16.8	34	0.82
422500270350	13	2.7	51	156	207	25.4	19.1	23.1	51	1.95
422500450350	16	4.5	63.5	197	270	30.2	25.4	31.8	67	3.9
422500770350	19	7.65	76	237	313	38.1	31.8	35.8	79.5	7
422500900350	22	9	102	353	445	46	43.7	41.4	119	16.8
422501350350	25	13.5	102	337	445	54	51	54	119	17.7
422502250350	32	22.5	127	406	527	60.5	57	58.5	133	32.7
422503150350	38	31.5	127	406	527	60.5	57	58.5	133	32.7