

## Heavy Duty Swivel Jaw-Jaw

---

### Product information



**Material:** Alloy Steel Quenched and Tempered

**Marking:** According to standard

**Temperature range:** -20°C up to +180°C

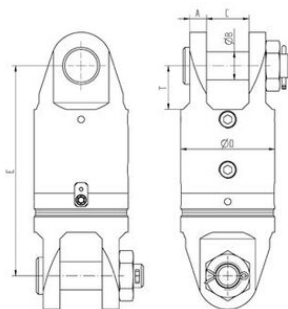
**Finish:** Painted

**Standard:** EN 10204

**Safety factor:** 5:1

## Heavy Duty Swivel Jaw-Jaw

### Blueprint



### Technical data

Part code	WLL ton	A mm	ØB mm	C mm	Ø D mm mm	E mm	T mm	Weight kg
422500950320	9.5	16	32	50	125	268	50	21
422501350320	13.5	22	38	60	130	313	70	27
422501700320	17	25	42	63	140	313	65	33
422502500320	25	26	50	78	150	328	65	41
422503500320	35	35	57	90	180	378	75	66
422505500320	55	40	70	110	220	473	100	119
422508500320	85	50	83	130	260	538	110	195
422512000320	120	60	95	150	320	658	135	347
422515000320	150	65	108	180	360	728	150	471