

## Open Spelter Socket with Safety Pin

---

### Product information



The open spelter socket from the standard series has a wide range of applications as a steel wire rope socket for general use in any situation and under various conditions. If the minimum breaking load of the wire is not higher than that of the open spelter socket, a 100% breaking load of the socket-wire combination is guaranteed. Non standard sizes or custom products available on request. ISO 3189.

**Working Load Limit:** 20% of the MBL

**Standard certification:** Certificate of Conformity, 3.1 material Certificate EN 10204  
... [Read more](#)

---

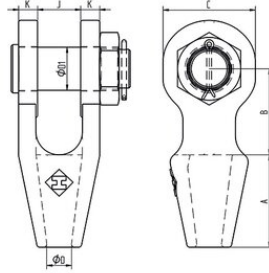
**Material:** Cast steel

**Temperature range:** -40°C up to +200°C

**Finish:** Galvanized or painted RAL 5013 Blue

## Open Spelter Socket with Safety Pin

### Blueprint



### Technical data

Part code	Diameter mm	Rope Ø range mm	MBL	Finish	Model	Rope Ø inch	A mm	B mm	C mm	J mm	K mm	Weight kg
122100700072	17.5	6-7	8	Galvanized	192	1/4	52	39.5	33.5	17.5	8	0.4
122101000072	20.5	8-10	12	Galvanized	194	5/16 - 3/8	58	44.5	39.5	20.5	11	0.8
122101300072	25.5	11-13	20	Galvanized	196	7/16 - 1/2	63.5	51	49	25.5	12	1.3
122101400072	30	14-16	30	Galvanized	198	9/16 - 5/8	76.5	63.5	62	32	14	2.3
122101700072	35	17-19	40	Galvanized	100	3/4	89	76	100	38	16	3.2
122101700075	35	17-19	40	Painted	100	3/4	89	76	100	38	16	3.2
122102000072	41	20-22	60	Galvanized	104	7/8	101	89	85.5	44	19	5
122102000075	41	20-22	60	Painted	104	7/8	101	89	85.5	44	19	5
122102300072	51	23-26	75	Galvanized	108	1	114	101	114	51	22	8.8
122102300075	51	23-26	75	Painted	108	1	114	101	114	51	22	8.8
122102700072	57	27-30	100	Galvanized	111	1 1/8	127	114	123.5	57	25	11.6
122102700075	57	27-30	100	Painted	111	1 1/8	127	114	123.5	57	25	11.6
122103100072	63	31-36	125	Galvanized	115	1 1/4 - 1 3/8	139	127	135	63	28	16.3
122103100075	63	31-36	125	Painted	115	1 1/4 - 1 3/8	139	127	135	63	28	16.3
122103700072	70	37-39	150	Galvanized	118	1 1/2	152	162	152	76	30	23.5
122103700075	70	37-39	150	Painted	118	1 1/2	152	162	152	76	30	23.5
122104000072	76	40-42	180	Galvanized	120	1 5/8	165	165	168	76	33	29
122104000075	76	40-42	180	Painted	120	1 5/8	165	165	168	76	33	29
122104300072	89	43-48	230	Galvanized	125	1 3/4 - 1 7/8	191	178	190	89	39	45
122104300075	89	43-48	230	Painted	125	1 3/4 - 1 7/8	191	178	190	89	39	45
122104900072	95	49-54	280	Galvanized	128	2 - 2 1/8	216	229	206	102	45	64.5
122104900075	95	49-54	280	Painted	128	2 - 2 1/8	216	229	206	102	45	64.5

## Open Spelter Socket with Safety Pin

### Technical data

Part code	Diameter mm	Rope Ø range mm	MBL	Finish	Model	Rope Ø inch	A mm	B mm	C mm	J mm	K mm	Weight kg
122105500072	108	55-60	375	Galvanized	130	2 1/4 - 2 3/8	229	254	225	113	53	88
122105500075	108	55-60	375	Painted	130	2 1/4 - 2 3/8	229	254	225	113	53	88
122106100072	121	61-68	425	Galvanized	132	2 1/2 - 2 5/8	248	273	251	127	60	125
122106100075	121	61-68	425	Painted	132	2 1/2 - 2 5/8	248	273	251	127	60	125
122106900072	127	69-75	500	Galvanized	135	2 3/4 - 2 7/8	279	279	266	133	73	162
122106900075	127	69-75	500	Painted	135	2 3/4 - 2 7/8	279	279	266	133	73	162
122107600072	133	76-80	600	Galvanized	138	3 - 3 1/8	305	286	274	146	76	195
122107600075	133	76-80	600	Painted	138	3 - 3 1/8	305	286	274	146	76	195
122108100072	140	81-86	700	Galvanized	140	3 1/4 - 3 3/8	330	298	286	159	79	224
122108100075	140	81-86	700	Painted	140	3 1/4 - 3 3/8	330	298	286	159	79	224
122108700072	152	87-93	750	Galvanized	142	3 1/2 - 3 5/8	356	318	310	171	83	280
122108700075	152	87-93	750	Painted	142	3 1/2 - 3 5/8	356	318	310	171	83	280
122109400072	178	94-102	950	Galvanized	144	3 3/4 - 4	381	343	352	191	89	378
122109400075	178	94-102	950	Painted	144	3 3/4 - 4	381	343	352	191	89	378
122110800072	190	108-115	1,200	Galvanized	146	4 1/2	460	480	430	208	101	564
122110800075	190	108-115	1,200	Painted	146	4 1/2	460	480	430	208	101	564
122112200072	250	122-130	1,400	Galvanized	150	5	500	500	550	210	120	922
122112200075	250	122-130	1,400	Painted	150	5	500	500	550	210	120	922
122114000072	275	140-155	2,000	Galvanized	160	5 1/2 - 6	580	500	590	230	140	1,295
122114000075	275	140-155	2,000	Painted	160	5 1/2 - 6	580	500	590	230	140	1,295
122115800072	290	158-167	2,500	Galvanized	170	6 1/2	675	600	640	310	160	1,950
122115800075	290	158-168	2,500	Painted	170	6 1/2	675	600	640	310	160	1,950