

CR Socket standard

Product information



CR sockets are the best possible connection between a chain and a steel wire system. These CR sockets, are made of high-quality cast steel. The integrated "Non Rotating System" (NRS) is remarkable and it ensures that the molded wire can't slip or turn out of the cone during use. Non-standard sizes or custom products available on request. ISO 3189. DNV type approval.

Working Load Limit: 20% of the MBL

Standard Certification: Certificate of Conformity, 3.1 material Certificate EN 10204, Proof Load Certificate*, ABS Type Approval**

*Sockets are proof loaded at 40% of the MBL up to an MBL of 875 Mtons.

**When ABS Product Certificate for Mooring is required, the test program as given in ABS Offshore Mooring Guide shall be followed.

[... Read more](#)

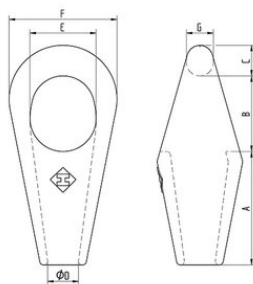
Material: Cast steel

Temperature range: -40°C up to +200°C

Finish: Painted or galvanized

CR Socket standard

Blueprint



CR Socket standard

Technical data

Part code	Code	Rope Ø range mm	MBL ton	Finish	Rope Ø inch	A mm	B mm	C mm	D, mm	E mm	F mm	G, mm	Weight kg
122103600340	512	31-36	140	Galvanized	1 1/4 - 1 3/8	140	85	38	39	75	124	35	7
122103600341	512	31-36	140	Painted	1 1/4 - 1 3/8	140	85	38	39	75	124	35	7
122104200340	517	37-42	160	Galvanized	1 1/2 - 1 5/8	160	110	42	44	92	150	38	11
122104200341	517	37-42	160	Painted	1 1/2 - 1 5/8	160	110	42	44	92	150	38	11
122104800340	519	43-48	200	Galvanized	1 3/4 - 1 7/8	188	128	50	51	110	180	45	18
122104800341	519	43-48	200	Painted	1 3/4 - 1 7/8	188	128	50	51	110	180	45	18
122105400340	522	49-54	250	Galvanized	2 - 2 1/8	215	125	55	57	115	200	50	25
122105400341	522	49-54	250	Painted	2 - 2 1/8	215	125	55	57	115	200	50	25
122106000340	524	55-60	300	Galvanized	2 1/4 - 2 3/8	230	145	65	63	135	230	57	35
122106000341	524	55-60	300	Painted	2 1/4 - 2 3/8	230	145	65	63	135	230	57	35
122106800340	526	61-68	400	Galvanized	2 1/2 - 2 5/8	250	160	75	73	160	262	65	51
122106800341	526	61-68	400	Painted	2 1/2 - 2 5/8	250	160	75	73	160	262	65	51
122107500340	527	69-75	500	Galvanized	2 3/4 - 2 7/8	280	175	80	79	171	278	70	62
122107500341	527	69-75	500	Painted	2 3/4 - 2 7/8	280	175	80	79	171	278	70	62
122108000340	528	76-80	600	Galvanized	3 - 3 1/8	315	210	85	86	184	300	75	75
122108000341	528	76-80	600	Painted	3 - 3 1/8	315	210	85	86	184	300	75	75
122108600340	529	81-86	700	Galvanized	3 1/4 - 3 3/8	340	205	100	92	204	320	90	93
122108600341	529	81-86	700	Painted	3 1/4 - 3 3/8	340	205	100	92	204	320	90	93
122109300340	530	87-93	800	Galvanized	3 1/2 - 3 5/8	360	220	105	99	215	340	95	110
122109300341	530	87-93	800	Painted	3 1/2 - 3 5/8	360	220	105	99	215	340	95	110
122110200340	531	94-102	900	Galvanized	3 3/4 - 4	380	240	110	108	234	376	100	141
122110200341	531	94-102	900	Painted	3 3/4 - 4	380	240	110	108	234	376	100	141
122111500340	533	108-115	1,000	Galvanized	4 1/4 - 4 1/2	450	260	125	120	252	400	110	186
122111500341	533	108-115	1,000	Painted	4 1/4 - 4 1/2	450	260	125	120	252	400	110	186
122113000340	540	122-130	1,250	Galvanized	5	517	293	140	140	275	460	125	317
122113000341	540	122-130	1,250	Painted	5	517	293	140	140	275	460	125	-