

Connector Grade 8 8-015

Product information



Proof Load tested at 2.5 times the WLL with certification for each batch manufactured.

... [Read more](#)

Features: Magnaflux crack detection is performed 100% on each batch. Fatigue rated to 20,000 cycles at 1.5 times the WLL.

Material: Quenched and Tempered Alloy Steel

Marking: According to standard

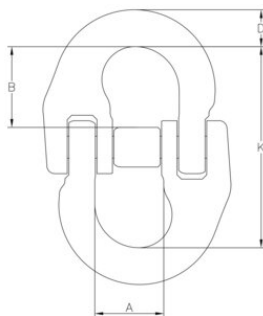
Temperature range: Tempering temperature minimum 400°C.

Standard: EN 1677-1

Safety factor: 4:1

Connector Grade 8 8-015

Blueprint



Technical data

Part code	Chain diameter mm	WLL ton	Size	A mm	B mm	D, mm	K mm	Weight kg
401200080010	5	0.8	1	10	13	6	35	0.04
401200110010	6	1.12	2	15	17	7	44	0.08
401200200010	7-8	2	3	18	22	9	57	0.2
401200320010	10	3.15	4	25	26	11	68	0.3
401200530010	13	5.3	5	30	35	16	91	0.7
401200800010	16	8	6	36	38	19	100	1.1
401201250010	18-20	12.5	7	42	46	22	122	1.9
401201500010	22	15	8	49	59	24	152	3
401202120010	26	21.2	9	55	62	30	162	5
401203150010	32	31.5	10	69	79	36	202	9