

Snatch Block McKissick 401 - 402 Tail Board - All Alloy

Product information



General:

The McKissick snatch blocks 401 and 402 from Crosby are Tail board type snatch blocks. The entire block is made from heat treated alloy steel which results in a weight reduction up to 40% in compare to non-alloy steel blocks with the same WLL.

Model 402 Available in WLL 12 and can be delivered with bronze bushing (BB) and with roller bearing (RB).

Model 401 Available from 25 up to 60 T. Only available with bronze bushing (BB).

Features:

- Bolt for opening feature is retained, to ensure no lost bolts.
- Opening feature permits easy insertion of rope without reeving, or while the block is suspended.
- Center pin equipped with pressure lube fitting.
- All sizes feature sheave grooves suited for a range of wire line diameters.
- Meets or exceeds all requirements of ASME B30.26 including identification ductility, design factor, proof load and temperature requirements.
- Meet other critical performance requirements including fatigue life and material traceability, not addressed by ASME B30.26.

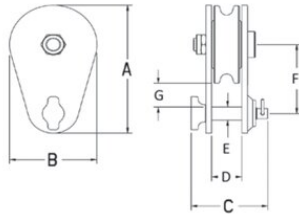
... [Read more](#)

Material: Forged Alloy steel.

Safety factor: 4:1

Snatch Block McKissick 401 - 402 Tail Board - All Alloy

Blueprint



Technical data

Part code	Code	Rope Ø range mm	WLL ton	Sheave dia mm	Bearing	A mm	B mm	C mm	D mm	E mm	F mm	G mm	Weight
424101200350	402	19-22	12	152	BB	251	152	106	46	25	130	41	6.8
424101200355	402	19-22	12	152	RB	251	152	106	46	25	130	41	6.8
424101200356	402	19-22	12	203	BB	303	206	106	46	25	155	41	9.5
424101200357	402	19-22	12	203	RB	303	206	106	46	25	155	41	9.5
424112003511	402	19-22	12	44.5	BB	303	206	106	46	25	155	41	9.5
424101200358	402	19-22	12	254	BB	356	257	106	46	25	183	43	13.2
424101200359	402	19-22	12	254	RB	356	257	106	46	25	183	43	13.2
424112003510	402	19-22	12	44.5	BB	356	257	106	46	25	183	43	13.2
424102500350	401	26-32	25	203	BB	343	210	156	65	38	181	60	22.7
424102500355	401	26-32	25	203	BB	392	260	156	65	38	208	62	29.5
424103000350	401	26-32	30	305	BB	473	311	178	77	44	254	79	43.1
424103000355	401	26-32	30	356	BB	530	362	178	77	44	286	86	49.9
424106000350	401	26-32	60	305	BB	516	308	220	71	64	273	89	43.1