

Snatch Block McKissick 407 Tail Board - Super Champion

Product information



General:

The McKissick snatch block 407 Champion from Crosby is a Tail board type snatch block. Can be delivered with bronze bushing (BB) and with roller bearing (RB).

Features:

- Bolt for opening feature is retained, to ensure no lost bolts.
- Opening feature permits easy insertion of rope without reeving, or while the block is suspended.
- Center pin equipped with pressure lube fitting.
- All sizes feature sheave grooves suited for a range of wire line diameters.
- Meets or exceeds all requirements of ASME B30.26 including identification ductility, design factor, proof load and temperature requirements.
- Meet other critical performance requirements including fatigue life and material traceability, not addressed by ASME B30.26.

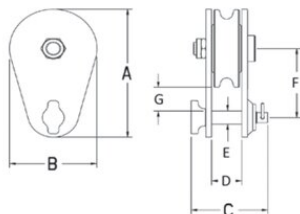
... [Read more](#)

Material: Forged steel.

Safety factor: 4:1

Snatch Block McKissick 407 Tail Board - Super Champion

Blueprint



Technical data

Part code	Rope Ø range mm	WLL ton	Sheave dia mm	Bearing	A mm	B mm	C mm	D mm	E mm	F mm	G, mm	Weight kg
424102000340	26-29	20	203	BB	344	206	152	65	38	181	80	19.1
424102000345	26-29	20	203	RB	344	206	152	65	38	181	80	19.1
424102000346	26-29	20	254	BB	397	257	152	65	38	208	62	24.9
424102000347	26-29	20	254	RB	397	257	152	65	38	208	62	24.9
424102000348	26-29	20	305	BB	451	311	152	65	38	235	65	31.8
424102000349	26-29	20	305	RB	451	311	152	65	38	235	65	31.8
4241020003410	26-29	20	356	BB	511	356	152	65	38	272	75	40.8
4241020003411	26-29	20	356	RB	511	356	152	65	38	272	75	40.8
424102500340	26-32	25	457	BB	625	464	181	77	44	330	79	74.8
424102500345	26-32	25	457	RB	625	464	181	77	44	330	79	74.8
424103000340	26-32	30	508	BB	734	514	211	90	57	387	105	97.5
424103000345	26-32	30	508	RB	734	514	211	90	57	387	105	97.5
424103000346	26-32	30	610	BB	826	616	211	90	57	429	95	131.5
424103000347	26-32	30	610	RB	826	616	211	90	57	429	95	131.5