

Beam Clamp Superclamp Universal

Product information



Can be fully loaded at any angle, i.e. 90° in 360° rotation. Designed for side load applied at full rated capacity. Low headroom anchor point. Single or twin lifting point. Light weight one piece adjustable design. Positive Grip on beam flange and web. Used for lifting, pulling or as an anchor point.

Proof load: 2 x WLL.

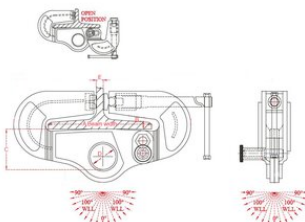
[... Read more](#)

Finish: Yellow painted.

Safety factor: 5:1

Beam Clamp Superclamp Universal

Blueprint



Technical data

Part code	WLL ton	Beam width	B mm	C mm	D mm	E mm	Weight kg
502300201900150	2.032	76-190	25.4	100	70	20	9.5
502330482040150	3.048	125-204	25,4	100	70	32	13.5
502340643050150	4.064	125-305	25,4	100	70	32	23.5
502350803050150	5.08	125-305	25,4	120	70	32	28.5
502310163050150	10.16	125-305	25,4	120	70	32	33.5
502301024000150	10.16	225-400	25.4	120	70	32	43.1