

## Swivel Safety Hook Pewag WLHW

---

### Product information



This hook is at its best when used with the Connex system.

It closes and locks automatically and cannot be opened while under load. The large swivel casing opens up an even wider range of application options and the larger jaw opening compared to HSW means that it may be used more flexibly.

[... Read more](#)

---

**Material:** High duty grade 10.

**Marking:** According to standard, CE-marked, Pewag or PW, winner or 10, H16, batch code and type.

**Finish:** Orange powder coated.

**Standard:** EN 1677-3

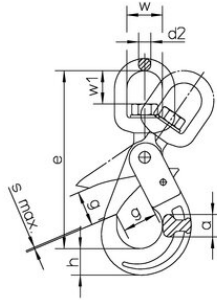
**Note:** Not for welded system.

**Safety factor:** 4:1

**Grade:** 10

## Swivel Safety Hook Pewag WLHW

### Blueprint



### Technical data

Part code	Code	WLL ton	EWL	a mm	d2 mm	g mm	e mm	h mm	w mm mm	w1mm mm	Weight kg
420500140600	WLHW 5/6	1.4	161	17	12	28	161	20	35	36	1.2
420500250600	WLHW 7/8	2.5	181	20	12	34	181	26	35	35	1.54
420500400600	WLHW 10	4	218	29	16	45	218	30	41	40	2.14
420500670600	WLHW 13	6.7	269	35	20	52	269	40	49	47	4.42
420501000600	WLHW 16	10	319	41	24	60	319	50	60	60	7.34